



# FUTURE URBAN MOBILITY IN BARCELONA.

Manuel Valdés  
Mobility and Infrastructures Manager  
Barcelona City Council

1. Modal Distribution of Mobility
2. Citizens' perspective
3. Main actions fronts from mobility
4. Infrastructures for mobility
5. Urban Logistics
6. Intermodality

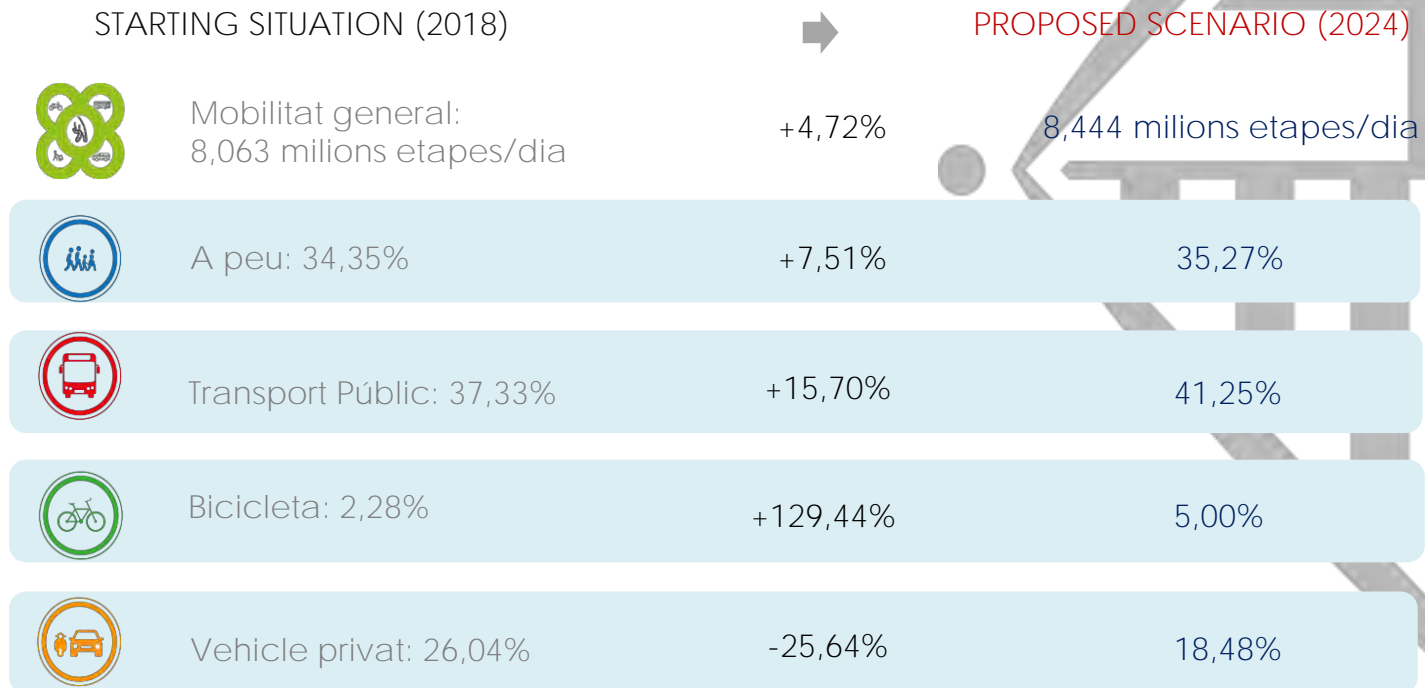


# 1. Modal Distribution of Mobility

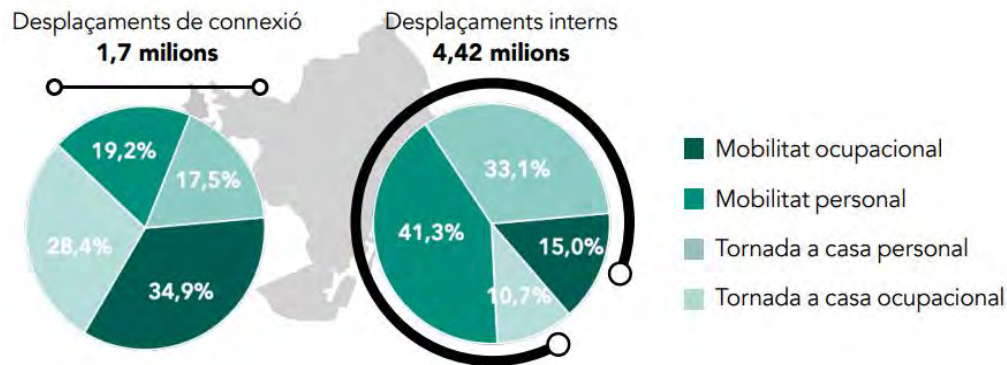
## Sustainable Urban Mobility Plan 2024

The plan specifies a total of 62 lines of action and more than 300 measures to achieve a more sustainable, safe and healthy mobility, and sets the goal that by 2024 81.52% of journeys will be made on foot, by public transport or by bicycle.

The proposal puts the pedestrian as the basis of mobility



## 2. Citizens' perspective



	HOMES		DONES		TOTAL	
Motiu del desplaçament	Desplaçaments	%	Desplaçaments	%	Desplaçaments	%
Treball i gestions de treball	1.418.268	17,2%	1.103.787	12,7%	2.522.055	14,9%
Estudis	178.307	2,2%	196.139	2,3%	374.446	2,2%
<b>Mobilitat ocupacional</b>	<b>1.596.575</b>	<b>19,4%</b>	<b>1.299.926</b>	<b>15,0%</b>	<b>2.896.501</b>	<b>17,1%</b>
Compres quotidianes	658.824	8,0%	880.048	10,1%	1.538.872	9,1%
Compres no quotidianes	104.655	1,3%	163.794	1,9%	268.449	1,6%
Metge/hospital	130.338	1,6%	233.452	2,7%	363.790	2,2%
Visita a un amic o amiga / familiar	195.253	2,4%	256.873	3,0%	452.126	2,7%
Acompanyar / tenir cura de persones	574.309	7,0%	873.864	10,1%	1.448.173	8,6%
Gestions personals	207.896	2,5%	212.217	2,4%	420.113	2,5%
Oci (espectacles, cinema, restaurants, esports)	550.857	6,7%	483.970	5,6%	1.034.827	6,1%
Sense destinació fixa / passejar	468.549	5,7%	425.877	4,9%	894.426	5,3%
Altres desplaçaments	..	..	..	..	..	..
<b>Mobilitat personal</b>	<b>2.896.595</b>	<b>35,2%</b>	<b>3.532.772</b>	<b>40,7%</b>	<b>6.429.367</b>	<b>38,0%</b>
<b>Tornada a casa o al domicili</b>	<b>3.743.552</b>	<b>45,4%</b>	<b>3.840.070</b>	<b>44,3%</b>	<b>7.583.622</b>	<b>44,8%</b>
<b>Total del SIMMB</b>	<b>8.236.723</b>	<b>100%</b>	<b>8.672.769</b>	<b>100%</b>	<b>16.909.491</b>	<b>100%</b>

### 3. Main actions fronts from mobility

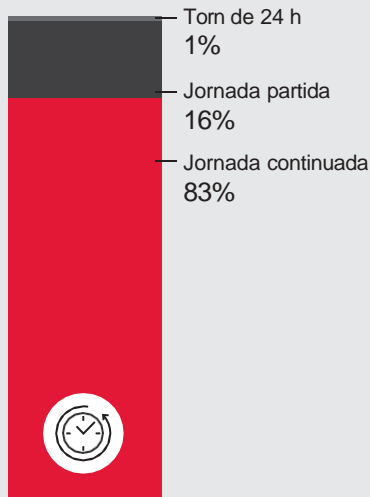
#### LABOR MOBILITY PLAN FOR BARCELONA CITY COMPANIES



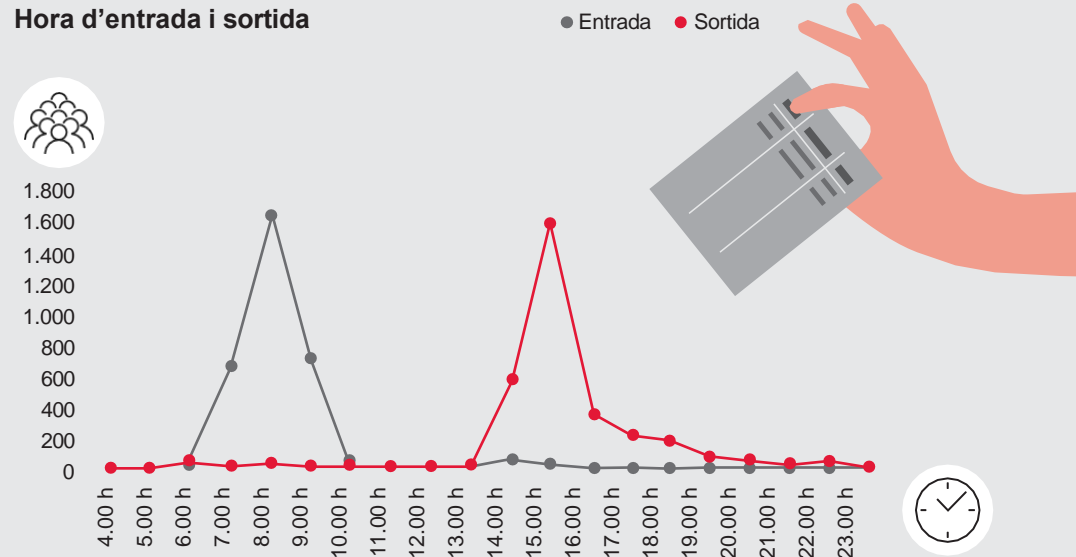
Ajuntament de Barcelona

#### PLAN DE DESPLAZAMIENTO DEL AYUNTAMIENTO DE BARCELONA

Tipus de jornada



Hora d'entrada i sortida



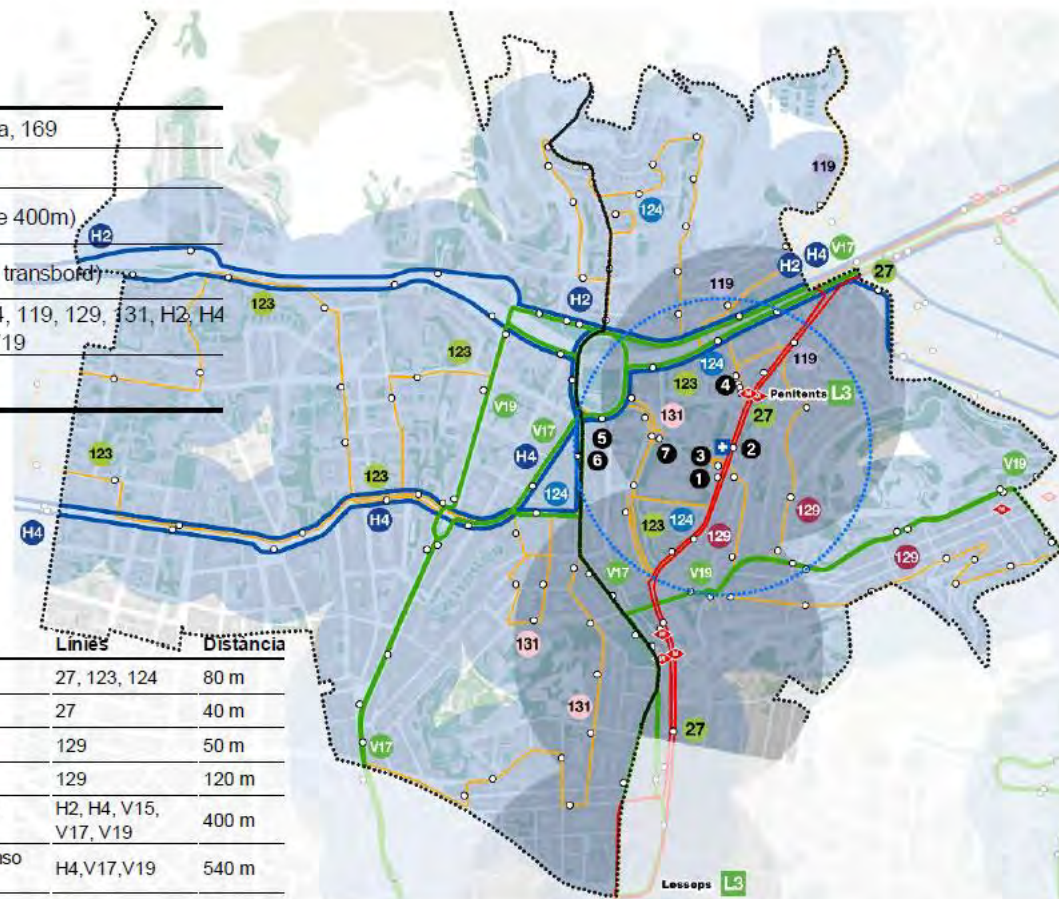
### 3. Main actions fronts from mobility

Sanitary mobility. Access by Public Transport to Hospitals and Primary Care Centers

 **7. Anàlisi de cobertura de transport públic als CAPs – CAP Vallcarca**

**CAP Vallcarca**

Adreça	Av. Vallcarca, 169
Població	57.261 hab
Accessibilitat directa a peu	12% (radi de 400m)
Cobertura territorial en transport públic	95% (sense transbord)
Linies de bus de referència	27, 123, 124, 119, 129, 131, H2, H4, V15, V17, V19
Distància mitja de parades a CAP	198 m



Parada	Linies	Distància
1 713 CAP Vallcarca	27, 123, 124	80 m
2 47 Parc Sanitari Pere Virgili	27	40 m
3 3302 Parc Sanitari Pere Virgili	129	50 m
4 2034 Metro Penitents	129	120 m
5 534 Alfonso Comin - República Argentina	H2, H4, V15, V17, V19	400 m
6 1543 República Argentina - Alfonso Comin	H4, V17, V19	540 m
7 3244 Parc Sanitari Pere Virgili	131	300 m

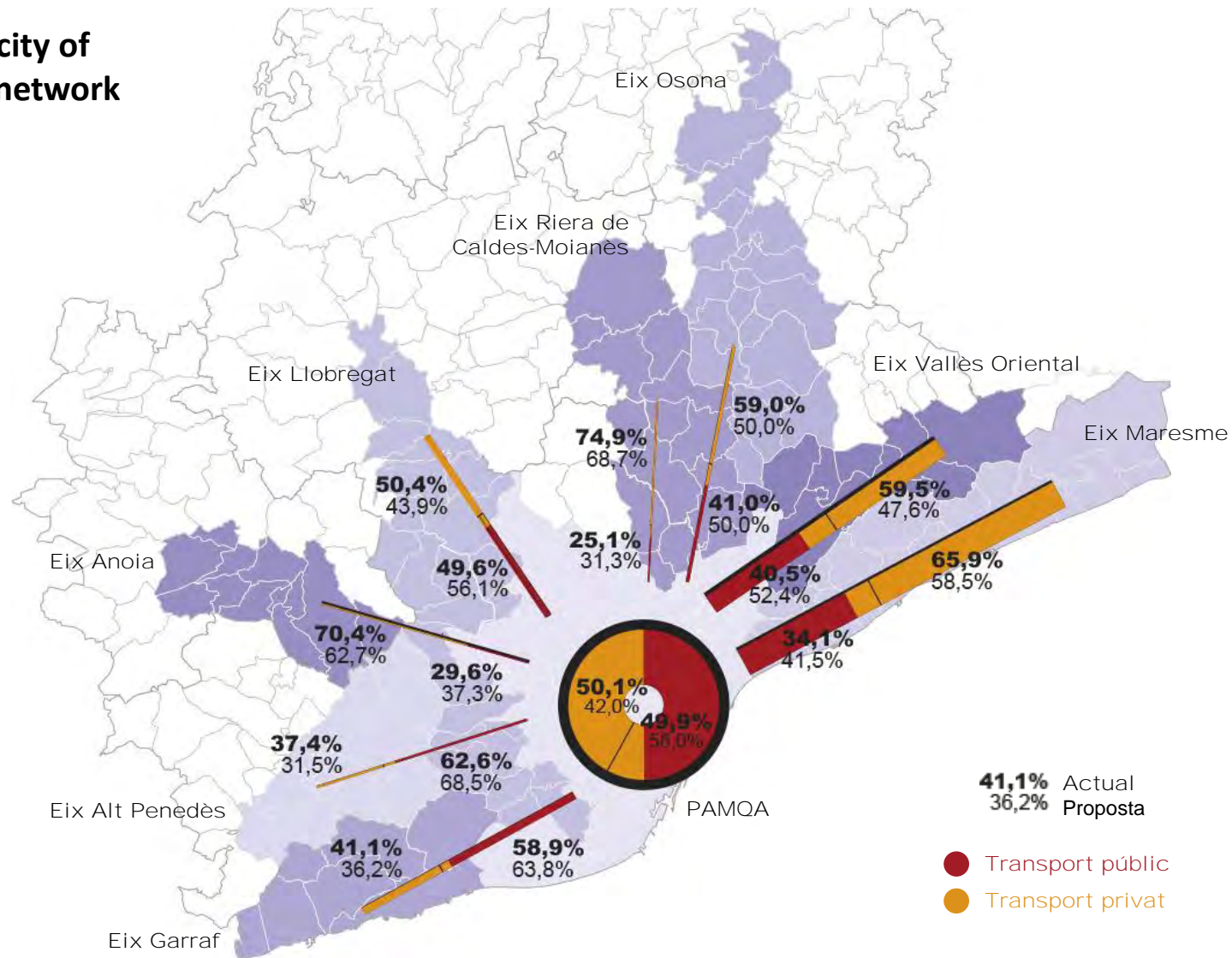
### 3. Main actions fronts from mobility

#### School mobility



## 4. Infrastructures for mobility

As a whole, the capacity of the public transport network will increase by 36%.





## 5. Urban Logistics



municipal strategy of the  
URBAN DISTRIBUTION OF GOODS 2030

**MAIN ACTIONS**

## 6. Intermodality

